



Bluetooth Setup Instructions

MAG-ic Probe Blu features a built-in Bluetooth transmitter to communicate wirelessly with your laptop or PC. Combined with the **MAG-ic Probe** software, it will allow you to upload a JPG picture or drawing of your instrument and pass the measurements from your **MAG-ic Probe** Controller to the drawing.

Configuring the Bluetooth communication is not difficult as long as the basic principles are understood.

Please Note - Due to the variety of Windows Versions, security settings, Anti-virus and Firewall options and configurations available, we cannot offer support for computer and native Windows issues that interfere with the operation of the Bluetooth interface or the correct communication of MAG-ic probe software over Bluetooth. It is expected that you are familiar with configuring your computer and operating system to allow serial communication.

Basic Steps


There are 2 basic steps in the setup process

- 1) Configuring the Bluetooth Radio
- 2) Configuring the Serial communication with MAG-ic Probe



1) Installing and configuring the Bluetooth radio

Note - If you are using a Laptop Computer that has built-in Bluetooth capability, you do NOT need to install the supplied Bluetooth radio. Follow the same configuration settings as below.

- Ensure the MAG-ic Probe unController is turned OFF
- Insert the Bluetooth radio into a USB Port on your computer.
- Windows should automatically discover and install drivers for the Bluetooth Device.
- Once installed you should have a Bluetooth Icon in your task bar. 
- Right-click this Icon and choose "Open Bluetooth Settings OR go to your Control Panel and click on the Bluetooth Devices Icon.
- You should see the settings box *Figure 1*.

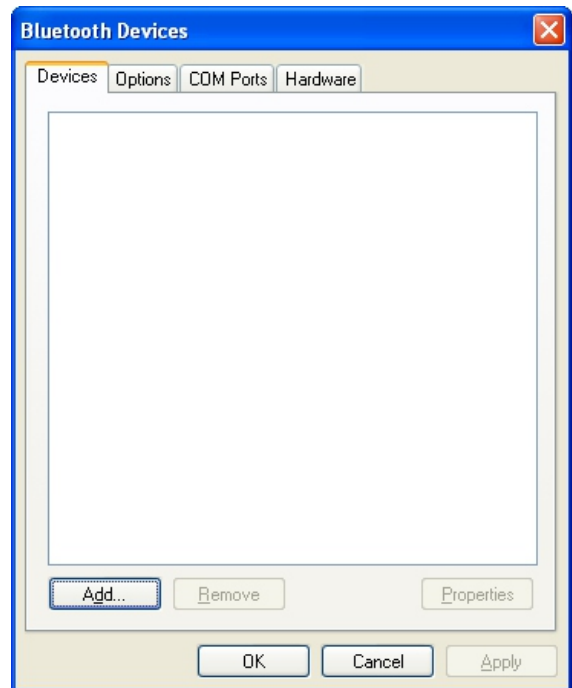


Figure 1

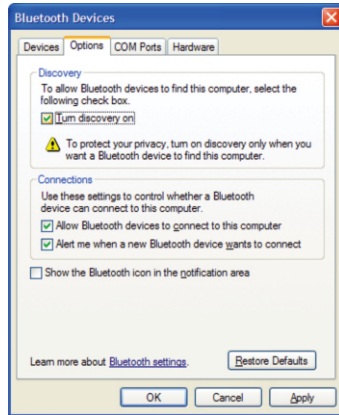


Figure 2

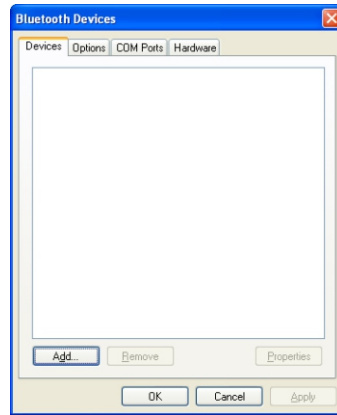


Figure 3



Figure 4

- First click on the **Options** tab and ensure the “**Turn Discovery ON**” checkbox is checked. (Figure 2)
- Click on the **Devices** tab and click **Add** (Figure 3)
- Turn ON your MAG-ic Probe Controller. (For interest only, if you look through the gap at the top of the battery cover clip, you should see a flashing red light)
- Check the “**My device is set up and ready to be found**” box (Figure 4)
- A new device “**Linvor**” should be found. At this time you can click on **Properties** and change the name to **MAG-ic Probe**, although this is not essential. Click **Next** (Figure 5)
- Click the **Use Passkey** option and enter the passkey **1234** and **Next** (Figure 6 & 7)



Figure 5

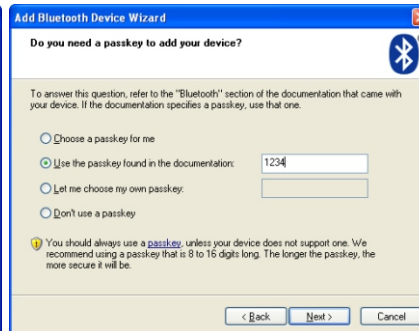


Figure 6

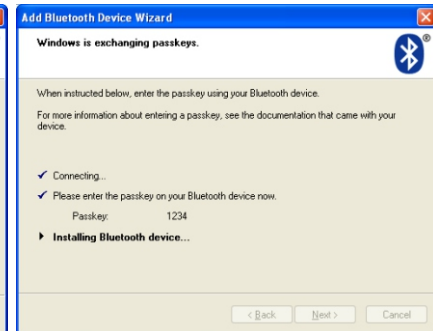
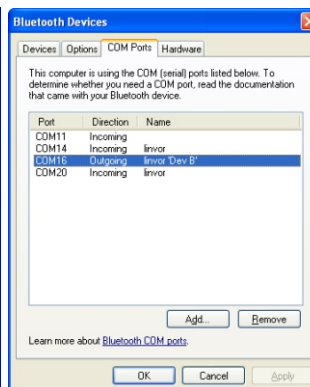


Figure 7

IMPORTANT! The last page of the wizard configures the Bluetooth Com port. The **Outgoing Com port** is important to remember as this will be needed for the MAG-ic Probe Software. It can also be verified in the **Com Ports** Tab.



MAG-ic Probe Software.

- A **MAG-ic Probe** Software file was sent to you via e-mail. Download the file to your hard drive and Re-name this file with a **.zip** extension rather than the **.xxx** extension.
- Extract this file to your hard drive.
- Run the **MAG-ic Probe.exe** file.
- The **MAG-ic Probe** interface page opens.
- Click **File - Open New Image** and select your JPG picture or drawing to import.
- Click **Label format** and choose your **Font** and **Text Color**.
- Click **Configuration** and **Com Port**
- Set the Com port that was configured previously (Outgoing Com Port)
- The red square in the right corner should start flashing green (Also the red flashing light referred to previously should be solid red.)
- The interface should now be ready and the display value should be shown on the screen.
- **Clicking** on the image should transfer the current reading to the picture.
- Perform your measurements and transfer the readings as required.
- Use the **Edit** menu to delete the last entry in case of an error.
- The **HOLD** mode can be invoked in 3 ways, either push the **button** on the device or hit the **spacebar** or click the **Hold icon** on screen. Only lower values will change the current reading so you can ensure your probe is perpendicular.
- Enter the Name and Notes in the space provided.
- Select **File - Print** to print out your drawing or **Save** it as required.
- The above setup is not required the next time you run the software. It should connect Automatically, just load a new picture and start measuring.

